

# THOR STRIP LIGHT

CN-H2835T-XXX-XX





### CCT Available



### Features

- Efficacy: CRI90+ up to 140lm/w, CRI95+ up to 130lm/w
- CRI/TM-30-15: CRI>95 / (Rf>93-Rg>99, R9>94) CRI>90 / (Rf>90-Rg>99, R9>65)
- Color Consistency : 2SDCM (typical)
- Waterproof: IP64 (Spray Glue Coated), IP65 (Thick Glue Coated), IP67 (Tube Water proof), IP68 (Glue Tube /Silicone Tube Waterproof)
- Lumen Maintenance: 55°C: L70/B10>54000hrs, lumen maintenance 88.51%, L90/B10>47000hrs, lumen maintenance 89.95%  
85°C: L70/B10>54000hrs, lumen maintenance 86.01%, L90/B10>38000hrs, lumen maintenance 89.95%
- Mounting: double-side thermal conductive adhesive tape or 9080H 3M self adhesive tape

### TM-30

#### CRI:90+

| CCT       | Rg  | Rf | SDCM |
|-----------|-----|----|------|
| 2050K±50  | 102 | 90 | 3    |
| 2400K±60  | 103 | 91 | 3    |
| 2700K±70  | 97  | 91 | 3    |
| 2900K±80  | 99  | 91 | 3    |
| 3400K±100 | 102 | 92 | 3    |
| 4000K±120 | 99  | 91 | 3    |
| 5000K±180 | 99  | 91 | 3    |
| 6000K±240 | 100 | 94 | 3    |

#### CRI:95+

| CCT       | Rg  | Rf | SDCM |
|-----------|-----|----|------|
| 2150K±50  | 100 | 95 | 3    |
| 2500K±60  | 101 | 95 | 3    |
| 2700K±70  | 99  | 93 | 3    |
| 2900K±80  | 102 | 95 | 3    |
| 3400K±100 | 101 | 94 | 3    |
| 4100K±120 | 101 | 93 | 3    |
| 5000K±180 | 101 | 94 | 3    |
| 6000K±240 | 99  | 94 | 3    |

Optical & Electrical Parameters

CRI:90+

| CN-H2835T-64-24 |                |      |      |      |
|-----------------|----------------|------|------|------|
| Voltage         | CCT/Wavelength | LM/m | LM/W | W/m  |
| 24V DC          | 2050K±50       | 921  | 120  | 7.68 |
|                 | 2400K±60       | 990  | 129  |      |
|                 | 2700K±70       | 1013 | 132  |      |
|                 | 2900K±80       | 1044 | 136  |      |
|                 | 3400K±100      | 1067 | 139  |      |
|                 | 4000K±120      | 1121 | 146  |      |
|                 | 5000K±180      | 1121 | 146  |      |
|                 | 6000K±240      | 1098 | 143  |      |

CRI:95+

| CN-H2835T-64-24 |                |      |      |      |
|-----------------|----------------|------|------|------|
| Voltage         | CCT/Wavelength | LM/m | LM/W | W/m  |
| 24V DC          | 2150K±50       | 737  | 96   | 7.68 |
|                 | 2500K±60       | 798  | 104  |      |
|                 | 2700K±70       | 883  | 115  |      |
|                 | 2900K±80       | 883  | 115  |      |
|                 | 3400K±100      | 936  | 122  |      |
|                 | 4100K±120      | 960  | 125  |      |
|                 | 5000K±180      | 1021 | 133  |      |
|                 | 6000K±240      | 1013 | 132  |      |

| CN-H2835T-128-24 |                |      |      |       |
|------------------|----------------|------|------|-------|
| Voltage          | CCT/Wavelength | LM/m | LM/W | W/m   |
| 24V DC           | 2050K±50       | 1393 | 121  | 11.52 |
|                  | 2400K±60       | 1474 | 128  |       |
|                  | 2700K±70       | 1532 | 133  |       |
|                  | 2900K±80       | 1589 | 138  |       |
|                  | 3400K±100      | 1601 | 139  |       |
|                  | 4000K±120      | 1658 | 144  |       |
|                  | 5000K±180      | 1670 | 145  |       |
|                  | 6000K±240      | 1635 | 142  |       |

| CN-H2835T-128-24 |                |      |      |       |
|------------------|----------------|------|------|-------|
| Voltage          | CCT/Wavelength | LM/m | LM/W | W/m   |
| 24V DC           | 2150K±50       | 1094 | 95   | 11.52 |
|                  | 2500K±60       | 1175 | 102  |       |
|                  | 2700K±70       | 1313 | 114  |       |
|                  | 2900K±80       | 1313 | 114  |       |
|                  | 3400K±100      | 1382 | 120  |       |
|                  | 4100K±120      | 1405 | 122  |       |
|                  | 5000K±180      | 1509 | 131  |       |
|                  | 6000K±240      | 1498 | 130  |       |

| CN-H2835T-160-24 |                |      |      |       |
|------------------|----------------|------|------|-------|
| Voltage          | CCT/Wavelength | LM/m | LM/W | W/m   |
| 24V DC           | 2050K±50       | 1699 | 118  | 14.40 |
|                  | 2400K±60       | 1828 | 127  |       |
|                  | 2700K±70       | 1915 | 133  |       |
|                  | 2900K±80       | 1958 | 136  |       |
|                  | 3400K±100      | 1972 | 137  |       |
|                  | 4000K±120      | 2030 | 141  |       |
|                  | 5000K±180      | 2059 | 143  |       |
|                  | 6000K±240      | 2016 | 140  |       |

| CN-H2835T-160-24 |                |      |      |       |
|------------------|----------------|------|------|-------|
| Voltage          | CCT/Wavelength | LM/m | LM/W | W/m   |
| 24V DC           | 2150K±50       | 1368 | 95   | 14.40 |
|                  | 2500K±60       | 1468 | 102  |       |
|                  | 2700K±70       | 1641 | 114  |       |
|                  | 2900K±80       | 1641 | 114  |       |
|                  | 3400K±100      | 1713 | 119  |       |
|                  | 4100K±120      | 1771 | 123  |       |
|                  | 5000K±180      | 1886 | 131  |       |
|                  | 6000K±240      | 1857 | 129  |       |

| CN-H2835T-240-24 |                |      |      |       |
|------------------|----------------|------|------|-------|
| Voltage          | CCT/Wavelength | LM/m | LM/W | W/m   |
| 24V DC           | 2050K±50       | 2548 | 118  | 21.60 |
|                  | 2400K±60       | 2743 | 127  |       |
|                  | 2700K±70       | 2829 | 131  |       |
|                  | 2900K±80       | 2916 | 135  |       |
|                  | 3400K±100      | 2894 | 134  |       |
|                  | 4000K±120      | 2894 | 134  |       |
|                  | 5000K±180      | 3067 | 142  |       |
|                  | 6000K±240      | 3045 | 141  |       |

| CN-H2835T-240-24 |                |      |      |       |
|------------------|----------------|------|------|-------|
| Voltage          | CCT/Wavelength | LM/m | LM/W | W/m   |
| 24V DC           | 2150K±50       | 2030 | 94   | 21.60 |
|                  | 2500K±60       | 2203 | 102  |       |
|                  | 2700K±70       | 2462 | 114  |       |
|                  | 2900K±80       | 2462 | 114  |       |
|                  | 3400K±100      | 2592 | 120  |       |
|                  | 4100K±120      | 2635 | 122  |       |
|                  | 5000K±180      | 2829 | 131  |       |
|                  | 6000K±240      | 2808 | 130  |       |

## Other Parameters

| Model No.        | LED QTY (pcs/m) | Min Cuttable Length | No Brightness Difference MAX | UL Max Run | Working Temperature | Storage Temperature |
|------------------|-----------------|---------------------|------------------------------|------------|---------------------|---------------------|
| CN-H2835T-64-24  | 64              | 125mm               | 9.5m                         | 10m        | -20~+60°C           | -20~+70°C           |
| CN-H2835T-80-24  | 80              | 100mm               | 7m                           | 6.5m       |                     |                     |
| CN-H2835T-128-24 | 128             | 62.5mm              | 7m                           | 8m         |                     |                     |
| CN-H2835T-160-24 | 160             | 50mm                | 5.5m                         | 5m         |                     |                     |
| CN-H2835T-240-24 | 240             | 33.3mm              | 6m                           | 3.5m       |                     |                     |

**NOTE:**

- The above data were measures under standard conditions and actual data may be different. We would update data without further notice.
- The luminous flux is tested while the corresponding-color products were lightened.
- UL max run refers to operating length at UL class II @100W.24V.
- Luminous flux values were measured accordance to IES LM-80-08. LED chips with range tolerance of +/- 10%.
- Each maximum-run requires a dedicated power feed from the driver. Do not extend exceed the recommended maximum run length. Max run may exceed Class 2 limits.
- Actual wattage may be different from the calculated wattage due to voltage drop while using.
- Actual efficacy value is determined by the specific LED driver (power supply). An estimated efficacy value can be calculated as follows: Luminous intensity divided by average power consumption.
- Do not install products in the conditions that exceed the listed ambient temperature. Exceeding the maximum ambient temperature may damage LED chips, reduce the total lamp life, luminous intensity output, and/or adversely impact color consistency.
- Operating temperature was measured under the minimum and maximum ambient temperature environment.
- Cutting segment are marked on the profile below.

## Performance

- LED chip data measured in accordance to IES LM-80-08.
- Photometric & Colorimetry data measured in accordance to IES LM-79-08, in Blueview 's TUV Innovation Lab.

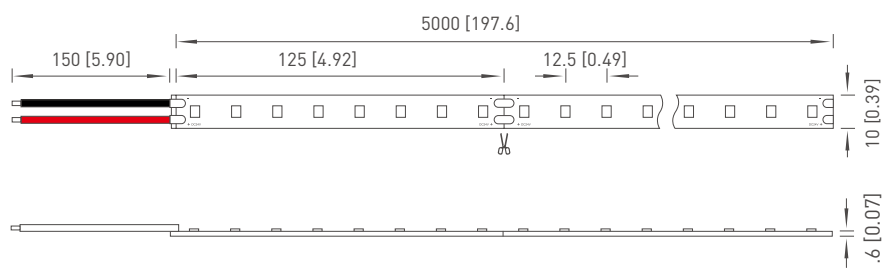
## Compliance & Regulatory Approvals

|  |           |  |
|--|-----------|--|
|  | CE LVD    | Standard: EN 60598-2-21: 2015; EN 60598-1: 2015; EN 62471: 2008; EN 62493:2015; EN 62031: 2015+A1: 2013+A2: 2015 |
|  | CE EMC    | Standard: EN IEC 55015: 2019; EN IEC 61000-3-2: 2019; EN 61000-3-3:2013+A1: 2019;EN 61547: 2009                  |
|  | CB        | Standard: IEC 62031:2018   |
|  | UL LISTED | Standard: UL 2108 E354137-Low-voltage Lighting Systems, Power Units, Luminaires and Fittings                     |
|  | RoHS      | Standard: IEC62321   |

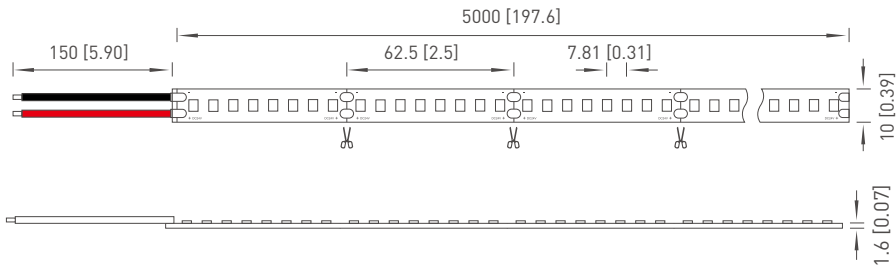
## Profile Drawings

Unit: mm [inch]

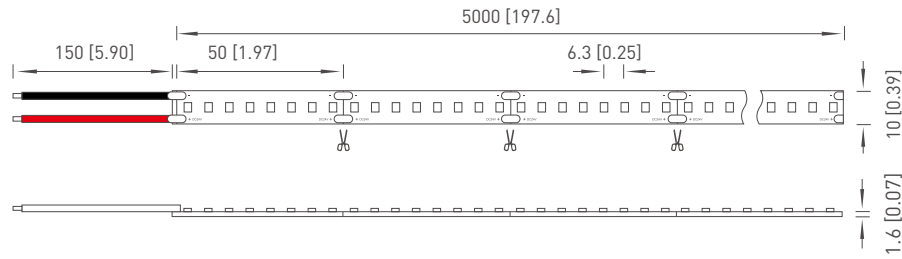
CN-H2835T-64-24



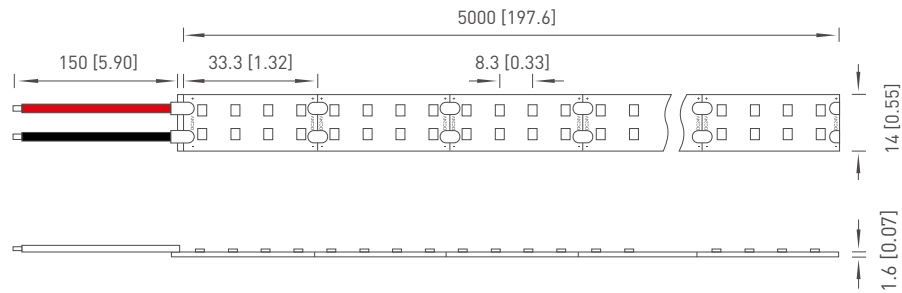
CN-H2835T-128-24



CN-H2835T-160-24



CN-H2835T-240-24



**Note:**

- For LED quantity less than 160leds/m with standard power, we recommend to use 20AWG parallel wire/sheathed cable with wire length less than 20cm, user need to reduce the max run when the wire length more than 20cm.
- For LED quantity more than 160leds/m with standard power, we recommend to use 18AWG parallel wire/sheathed cable in single feed, or 20AWG parallel wire or sheathed cable in both ends with wire length less than 20cm. Users need to reduce the max run properly when the wire length more than 20cm.
- Above conditions are only applicable to products with the PCB width of 10mm or more, for other width needs to be evaluated separately.

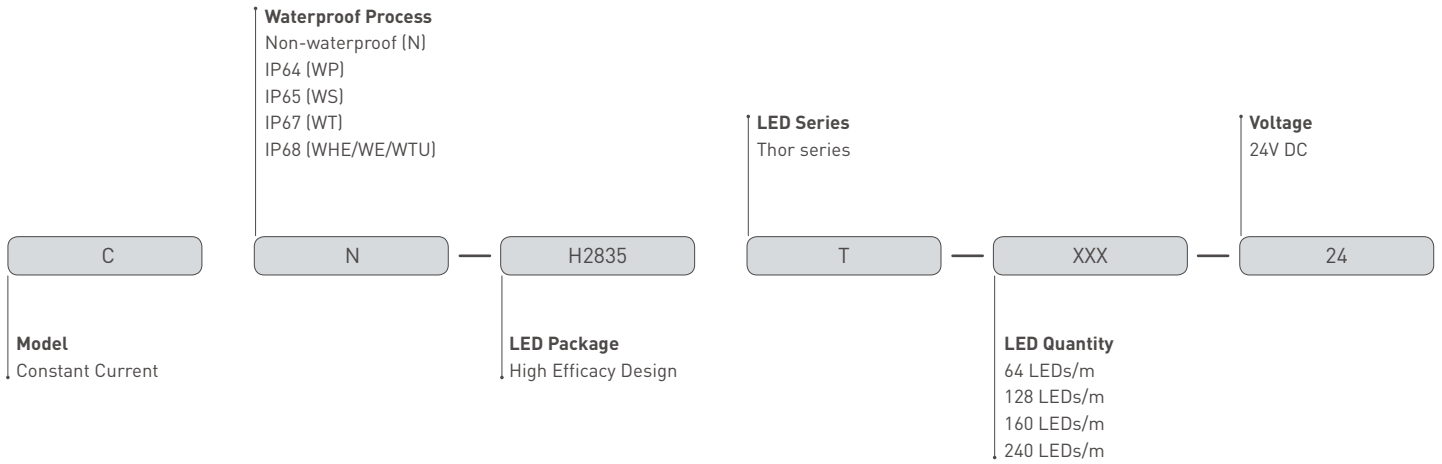
**Packaging information**

| Model No.        | Product Size L*W (mm) | Carton Size (mm) | Meter/Reel | Reel/Carton | Net Weight (kg) | Gross Weight (kg) |
|------------------|-----------------------|------------------|------------|-------------|-----------------|-------------------|
| CN-H2835T-64-24  | 5000*10               | 550*400*340      | 5          | 100         | 7.93 (1±10%)    | 12.50 (1±10%)     |
| CN-H2835T-128-24 | 5000*10               | 550*400*340      | 5          | 100         | 8.06 (1±10%)    | 12.69 (1±10%)     |
| CN-H2835T-160-24 | 5000*10               | 550*400*340      | 5          | 100         | 8.56 (1±10%)    | 13.19 (1±10%)     |
| CN-H2835T-240-24 | 5000*14               | 550*400*340      | 5          | 70          | 6.63 (1±10%)    | 12.12 (1±10%)     |

**NOTE:**

- The above quantity and weight are only for the illustrated packaging method. There will be differences in the quantity and weight with other packaging methods.
- The gross weights of all above model are less than volume weight, the volume weight is 14.96kg.

Ordering Code



Note: for more info about waterproof process, please refer to the waterproof instruction.

Recommended power supply upon working length

| CN-H2835T-64-24 | Operating Length (m) |       |       |       |       |
|-----------------|----------------------|-------|-------|-------|-------|
| Parameters      | 1                    | 3     | 5     | 7     | 10    |
| Total Power (W) | 7.68                 | 23.52 | 38.40 | 46.20 | 73.68 |

| CN-H2835T-128-24 | Operating Length (m) |       |       |       |       |
|------------------|----------------------|-------|-------|-------|-------|
| Parameters       | 1                    | 3     | 5     | 6     | 7     |
| Total Power (W)  | 11.52                | 34.08 | 56.64 | 67.92 | 78.72 |

| CN-H2835T-160-24 | Operating Length (m) |       |       |       |       |
|------------------|----------------------|-------|-------|-------|-------|
| Parameters       | 1                    | 2     | 4     | 5     | 6     |
| Total Power (W)  | 14.40                | 29.04 | 57.36 | 71.52 | 86.16 |

| CN-H2835T-240-24 | Operating Length (m) |       |        |        |        |
|------------------|----------------------|-------|--------|--------|--------|
| Parameters       | 1                    | 3     | 5      | 6      | 7      |
| Total Power (W)  | 21.84                | 64.56 | 106.08 | 127.44 | 139.92 |

BLUEVIEW ELEC-OPTIC TECH CO.,LTD

Tel: +86-28-8148 0011  
 Fax: +86-28-8148 1258

Web.: www.blueviewled.com  
 Email: sales@blueviewled.com

Addr.: No. 1000, Section 2, Konggang 2nd Road, Shuangliu, Chengdu 610207, Sichuan, CHINA